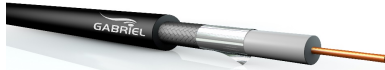


VIDEO CABLE HD-SDI



DIGITAL
HD-SDI
PVC

GAV 7508 HD

CONSTRUCTION DATA

Inner conductor	0,82 mm ϕ (AWG 20) Bare Copper
Insulation	3,7 mm ϕ Gas-injected foam PE
Shielding	Aluminum Foil % 100
Shielding	Tinned Copper Braiding % 95
Outer Jacket	Pvc
Outer Diameter	5,9 mm ϕ
Cable Weight	47 Kg/Km

ELECTRICAL DATA

DC resistance	< 35 Ω / km (Inner conductor) < 10 Ω / km (Shield)
Mutual capacitance	56 pF / m
Velocity of Propagation	80%
Characteristic Impedance	75 $\Omega \pm 2$
Screening factor	≥ 100 dB
Max. Operating Voltage	300 V Rms
Attenuation (db /100 Mt)	Return loss (dB)

Frequency (MHz)	Attenuation(db /100 Mt)	Frequency (MHz)	(dB)
1	0,9	50 – 300	≥ 26
10	2,9	300 – 3000	≥ 22
30	4,5	3000 – 3500	≥ 18
100	7,9	3500 – 5000	≥ 15
270	12,8		
540	18,3		
720	21		
800	22,8		
1000	25,5		
1500	32		
2000	36,5		
2250	39,5		
3000	47,5		
6000	76,0		

MECHANICAL DATA

Minimum bending radius	8 x D (D= outer diameter)
Temperature range	-30° C to +70° C

APPLICATION

Gabriel coaxial video cable meets all the requirements of the Broadcast installations for HDTV and SDI high-definition video in spite of its reduced diameter.

The inner conductor insulation is made of a special gas-injected dielectric HDPE which guarantees a very low capacitance value.

For analogue and digital video signals transmission

ISO9001 CERTIFIED ROHS COMPLIANT CE

MOBIL
STUDIO
INSTALLATION
STAGE
GABRIEL