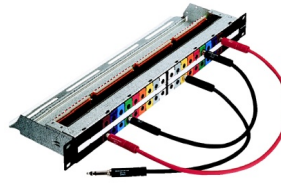


# NPP-TB

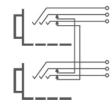
2 x 24 TB (BP0316/MIL-P-642/2) jacks, full normalled (programmable), push terminals, wire O.D. 0,08 - 0,5 mm<sup>2</sup> (AWG 28 - 20), stripping length 5 - 6 mm (0,236 in)

The NPP-TB patch panels are equipped with gold plated, high quality long life NJ6TB-V Jacks for BPO/MIL style plugs. The panels are easily programmable for six switching configurations and offer a flexible grounding system. The NPP-TB patch panels are very robust and compactly designed for 19" rack mount (19" x 1U) with galvanized metal housing and a built-in cable bar on the rear for securing wires. There is a rear extension bar (NPP-S) available as an option. On the front side there is an attractive additional lettering area for each channel pair with a marking strip and individual snap-on colour coding plates.



## Image gallery

Full Normalled



## Features & Benefits

- 2 x 24 Neutrik NJ6TB-V long frame 1/4" TRS jacks acc. to BPO 316 / MIL-P-641/3
- Very robust and compact galvanized metal housing
- Eye catching channel identification through colored snap-on coding tabs
- 6 easily programmable switching configurations by jumpers (see assembly instruction)
- Qualified for analog and digital signals acc. AES3, 48 kHz sampling frequency
- With high quality long life gold plated Neutrik jacks
- Flexible grounding system (see Assembly Instruction)

## Technical Information [hide](#)

### Product

Title NPP-TB

Connection Type Patch Panel

### Mechanical

Locking device Retention spring

## Accessories

NKTB\*



NPP-C



NPP-LB-\*



NPP-S

