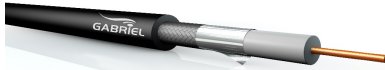


VIDEO CABLE HD-SDI



DIGITAL
HD-SDI
PVC

GAV 7506 HD

CONSTRUCTION DATA

Inner conductor	0,60 mm ϕ (AWG 23) Bare Copper
Insulation	2,8 mm ϕ Gas-injected foam PE
Shielding	Aluminum Foil % 100
Shielding	Tinned Copper Braiding % 95
Outer Jacket	Pvc
Outer Diameter	4,5 mm ϕ
Cable Weight	27 Kg/Km

ELECTRICAL DATA

DC resistance	< 55 Ω / km (Inner conductor) < 17 Ω / km (Shield)
Mutual capacitance	51 pF/m
Velocity of Propagation	80%
Characteristic Impedance	75 $\Omega \pm 2$
Screening factor	≥ 100 dB
Max. Operating Voltage	300 V Rms
Attenuation (db /100 Mt)	Return loss (dB)

Frequency (MHz)	Attenuation(db /100 Mt)	Frequency (MHz)	(dB)
1	1,2	50 – 300	≥ 26
10	3,5	300 – 3000	≥ 22
30	5,7	3000 – 3500	≥ 18
100	11	3500 – 5000	≥ 15
270	16,1		
540	22,8		
720	26,9		
800	30,8		
1000	32,5		
1500	41,3		
2000	45		
2250	50		
3000	61		

MECHANICAL DATA

Minimum bending radius	8 x D (D= outer diameter)
Temperature range	-30° C to +70° C

APPLICATION

Gabriel coaxial video cable meets all the requirements of the Broadcast installations for HDTV and SDI high-definition video in spite of its reduced diameter.

The inner conductor insulation is made of a special gas-injected dielectric HDPE which guarantees a very low capacitance value.

For analogue and digital video signals transmission

ISO9001 CERTIFIED ROHS COMPLIANT CE

MOBIL
STUDIO
INSTALLATION
STAGE
GABRIEL